



2016 Presenter Bios

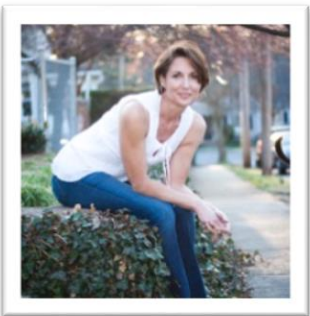
THURSDAY, AUGUST 18



Karin Lawson, PsyD, CEDS, RYT

Karin is a licensed psychologist, certified eating disorder specialist and registered yoga teacher in Miami, Florida. As a clinician in private practice, Karin specializes with clients who struggle with eating disorders, as well as clients who are dealing with major medical issues. Certified in Curvy Yoga, Karin is particularly dedicated to the support of people in larger bodies as she seeks to dispel myths and create new experiences. Karin had the honor of being on the Binge Eating Disorder Association's Conference Committee for

2015 and she is also a member of IAEDP having served on the Education Committee of the Miami-Dade chapter for 4 years.



Debra Benfield, M.Ed., RDN, LDN, RYT

With 30 years of clinical experience, Debra is a nutrition therapist specializing in the treatment of eating disorders using evidence-based best practices in a compassionate, supportive, and caring manner. Over the last 10 years, Debra has integrated yoga into her treatment and became a registered yoga teacher with Curvy Yoga 3 years ago. Debra is passionate about offering yoga, along with nutritional therapy, to integrate the wisdom of embodiment as supported by mindfulness and accessible yoga for everybody.



Susan Mullins, LMHC, TEP, CEDS

Susan is in private practice in Tampa, Florida. She has been a licensed clinician for 25 years and specializes in working with clients on issues pertaining to eating disorders, addictions and trauma. Over the years, she has worked in various residential addiction and eating disorder treatment facilities. She currently facilitates psychodrama groups at several residential centers in Tampa. She is a member of the executive council of the American Society of Group Psychotherapy and Psychodrama and has recently accepted

an adjunct position in the Mental Health and Rehabilitation Counseling Department at the University of South Florida. In addition, she sits on the board of the local chapter of the International Association of Eating Disorder Professionals. She and Sandy Seeger established South Tampa Psychodrama Training.



Sandy Seeger, LMHC, TEP

Sandy is in private practice in Tampa, Florida using action methods for over 20 years with children and families. She specializes in eating disorders, trauma, and anxiety treatment for children. In addition, she currently teaches *Group Counseling Methods* at the University of South Florida. She and Susan Mullins co-created South Tampa Psychodrama Training and have conducted trainings at multiple conferences and international venues. Sandy has served on several boards locally including; Kathy's Place for Grieving Children and The Tampa Bay Association of Women Psychotherapists. She currently sits on the board of the American Society of Group Psychotherapy and Psychodrama

FRIDAY, AUGUST 19



Valerie Martin, LMSW*, RYT-200

Valerie is an Adventure Therapist at The Ranch (formerly primary therapist in The Ranch's eating disorders program), where she focuses on helping clients heal and integrate using a mind-body approach including yoga, high and low ropes elements, somatic therapy, and variety of experiential interventions. Valerie blogs on mind + body + spirit wellness at WakingUpInWonder.com, and has contributed to Recovery Warriors, Elephant Journal, Tiny Buddha, and Adios Barbie. She works with clients at The Ranch in recovery from eating disorders, substance abuse, trauma, relationship/intimacy issues, and mood and anxiety disorders.



Jenn Burnell MS, RD/LDN CEDRD

Jenn has specialized in eating disorders since 2003. She has worked at all levels of care, most recently as the residential Nutrition Therapist for Carolina House. Her passion lies in presenting on eating disorders as it relates to both the body and the mind. Jenn is a Certified Eating Disorder Registered Dietitian (CEDRD) and Approved Supervisor through the International Academy of Eating Disorders Professionals (IAEDP). She helped review the (now) Academy of Nutrition and Dietetics' Position Paper and Practice Paper for the Nutrition Intervention in the Treatment of Eating Disorders. As her "side job", Jenn has been a Certified Group Fitness Instructor since 1991.

Seed

Southeastern Eating Disorder



7th ANNUAL CONFERENCE
AUGUST 19-20, 2016 | HILTON SANDESTIN BEACH RESORT



Dr. Kim Dennis

Kim is a board-certified psychiatrist who specializes in eating disorder treatment, addiction recovery, trauma / PTSD and co-occurring disorders in women and girls. As CEO/Medical Director Emeritus of Timberline Knolls, she supports clinical program development and is involved in the Timberline Knolls Clinical Development Institute and other outreach initiatives. Dr. Dennis maintains a holistic perspective in the practice of psychiatry. She incorporates biological, psycho-social and spiritual approaches into the individually tailored treatment plan for each resident. Dr. Dennis

obtained her medical degree from the University of Chicago Pritzker School of Medicine and completed her psychiatry residency training at the University of Chicago Hospitals, where she served as chief resident.



Debra Jay

Debra is the author of the newly released book, *It Takes a Family: A Cooperative Approach to Lasting Sobriety*, published by Hazelden. She is also author of *No More Letting Go: The Spirituality of Taking Action Against Alcoholism and Drug Addiction*, and has co-authored the top seller on intervention, *Love First*, and the book *Aging and Addiction*. She is co-founder of private practice providing clinical intervention services and is founder of Structured Family Recovery™ services and training. She designed the highly acclaimed clinical intervention training program hosted annually by the Betty Ford Center. Debra previously worked as an addictions clinician for the Hazelden Foundation working in

inpatient treatment. She was coordinator of the older adult program and served as facilitator of the family program. She has served as trustee on several boards, including the Care Continuum Board for the St. John Providence Health System.

Katherine Godwin, M.D.

Dr. Godwin has served as medical director and attending physician of the Laureate Eating Disorders Program adult program since 2010 and has practiced at Laureate since 2005. Dr. Godwin is board certified by the American Board of Psychiatry and Neurology. She received her medical degree from Creighton University in Omaha, Nebraska, and completed her residency in psychiatry at the University of California, San Diego, where she served as chief resident.

Dr. Godwin has presented about psychopharmacologic considerations with eating disorders at several local conferences, and she has also presented at the Plymouth State conference in New Hampshire and the national IAEDP Symposium. Dr. Godwin is an advocate for patients and their families, and she encourages



her patients to participate actively in treatment to work together toward obtaining optimal symptom management.



Teri McCann, PhD, CEDS

Teri is the founder and executive clinical director of Fairhaven. She earned a Doctorate of Philosophy at Kansas State University. She is a Licensed Psychologist, Certified Rehabilitation Counselor, and Certified Eating Disorder Specialist. In addition to holding a Mental Health Service Provider designation, she has demonstrated competency in the areas of Social-Personality Psychology and Statistics and Measurement. She is a member of the American Psychological Association, the Eating Disorders Coalition of Tennessee, and the Academy for Eating Disorders.



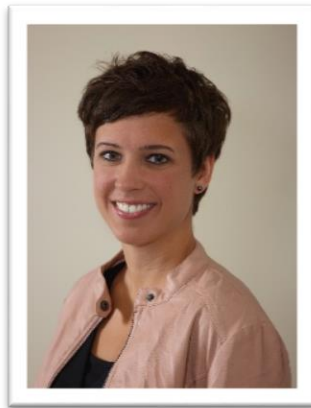
Tammy Beasley, RDN, CEDRD, LD, CSSD

Tammy has been practicing as a registered, licensed dietitian/nutritionist with the Academy of Nutrition and Dietetics for over thirty years, of which the last 25 have been specialized in the field of eating disorders. Tammy was the first RD to become a certified eating disorder registered dietitian (CEDRD) with the International Association of Eating Disorder Professionals in 1993, and has served on the Certification Committee since 2008, stepping into the role of Director in 2013. During her tenure, the Commission on Dietetic Registration approved the CEDRD Certification for RDs in the field of eating disorders as of June, 2015. She serves as Chair of the Nutrition and Dietetics Advisory Board for Auburn University, and is currently President of the Alabama Dietetic Association. In November 2015, she joined Castlewood Treatment Centers as National Coordinator for Educational Outreach, working with both clients in treatment and clinicians dedicated to their clients' recovery. Tammy is passionate about translating evidence-based science into practical and insightful messages for clients to begin healing their relationship with food and body and for clinicians to incorporate into their own practices.

Seed

Southeastern Eating Disorder

7th ANNUAL CONFERENCE
AUGUST 19-20, 2016 | HILTON SANDESTIN BEACH RESORT



Bethany Blanco-Booth, LMFT

Bethany obtained her Master's degree in Marriage and Family Therapy from Richmond Graduate University. While pursuing her Master's, she completed a thesis regarding the parallels between modern slavery and intimate partner violence, which led her to a deep interest in trauma treatment. For the past three years Bethany has led trauma groups and body acceptance groups at the Women's Center for Trauma and Eating Disorders, located at Ridgeview Institute. Additionally, Bethany sees outpatient clients at her own practice, Better Story Counseling, in Marietta, GA.

SATURDAY, AUGUST 20



Holly Cook, LPC-MHSP

Holly is the Executive Director at the Integrative Life Center, a treatment center in Nashville Tennessee that offers integrative approaches to treating individuals with eating disorders, addictions and other co-occurring disorders in a community based setting. She has more than 25 years of experience as a therapist, administrator and trainer in the field. Holly has presented throughout the United States and Germany and currently provides training for the US Army Family Advocacy Program in Motivational Interviewing and Trauma Informed Case Management.



Norman Kim, PhD

Norman completed his B.A. at Yale and his Ph.D. in Clinical Psychology at UCLA, where he was the recipient of an individual National Research Service Award from the NIH. He has developed an expertise in treatment and assessment of psychiatrically complex populations with a particular focus on Eating Disorders, Trauma, and Bipolar Disorder. He is an advocate for eating disorder awareness, and has endeavored to develop a clinical approach that focuses on the exploration of meaning as a path to healing. Norman is the

National Director for Program Development for Reasons Eating Disorder Center and Center for Change in UT.

Seed

Southeastern Eating Disorder

7th ANNUAL CONFERENCE
AUGUST 19-20, 2016 | HILTON SANDESTIN BEACH RESORT



Stephanie Zerwas, PhD

Stephanie is the Clinical Director of the UNC Center of Excellence for Eating Disorders. A clinical and developmental psychologist, Dr. Zerwas works as a family-based therapist and as a researcher studying the genetics of eating disorders and is a member of the Psychiatric Genomics Consortium – Anorexia Nervosa Working Group. In addition, Dr. Zerwas studies the factors that predict recovery from anorexia nervosa, eating disorders during pregnancy and postpartum, and how technology can assist eating disorder

treatment and research. She is a TEDx speaker and passionate about translating eating disorders science to patients and the public.



McCall Manning Dempsey

McCall, founder of Southern Smash, is an eating disorder survivor and passionate recovery advocate. After a 15-year battle, McCall sought treatment at the Carolina House in December 2010. Since then she has made eating disorder awareness and prevention her life's work and passion. McCall travels the country, sharing her story of hope and healing with audiences everywhere.

McCall also writes the popular blog, [Loving Imperfection](#). Her writing has been featured in various national print and online publications, including Women's Health Online. She has also appeared on HuffPostLive.com multiple times.



Heather R. Hayes, M.Ed., LPC, CIP

Heather is a Master's Level, Licensed Counselor, Certified ARISE Interventionist and Board Registered Interventionist (CIP), and co-founder of Hayes-Davidson and Associates (www.hayes-davidson.com). Heather is currently in private practice in Atlanta, Georgia, and on the staff of Linking Human Systems, LLC and LINC Foundation, Inc. She received her B.A. from Emory University and her M.Ed. from Antioch University. Ms. Hayes has treated addictions and other disorders for over 30 years. She specializes in the treatment of adolescents/ young adults, trauma, brain disorders and the full spectrum of addictive disorders. Ms. Hayes is the former President of the

Network of Independent Interventionists and has presented nationally and internationally on the issues of Addiction, Co-occurring/ Psychiatric Disorders, Disordered Eating, Trauma, and Adolescent/Young Adult Issues; she has been published in these areas and is currently collaborating on several writing projects on these topics and more.



Mary Dye, MPH, RD, CEDRD, LD/N

Mary Dye, oversees all nutritional care at OliverPyatt Centers as Director of Nutrition Services. She has served as consulting RD for New York University in Abu Dhabi, providing counseling and advising faculty on the assessment and treatment of eating disorders. Prior to joining OliverPyatt Centers, Ms. Dye was in private practice in New York City, and had formerly been lead dietitian for New York University's Health Center. Ms. Dye serves on two committees of the International Association of Eating Disorder Professionals (IAEDP). She coauthored "The CEDRD in Eating Disorder Care" with

fellow Nutrition and Health Management Committee members of IAEDP.



Annie Hoffman, MA, ATRBC, LMHC

Annie Hoffman, ATRBC, LMHC is a Board Certified Registered Art Therapist and Licensed Mental Health Counselor. She is a qualified supervisor in the state of FL for mental health counselors and provides supervision to art therapists. She completed her master's degree in Creative Arts Therapy at Drexel University in Philadelphia, PA. Ms. Hoffman has experience working with both children and adults in individual, group, and family counseling settings. She is a primary therapist and art therapist at the OliverPyatt Centers in Miami, FL. She is a member of the American Art Therapy Association and

currently serves as president for the Florida Art Therapy Association.



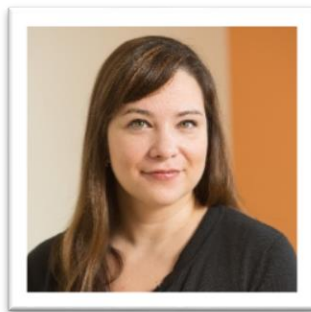
Kristin Canan

Kristin is a Licensed Graduate Social Worker in the state of Alabama and a Licensed Social Worker in the state of Colorado who holds a Master of Social Work degree and an Interpersonal Trauma Studies Certification from University of Denver. Ms. Canan has empowered individuals' healing journeys in a multitude of therapeutic, administrative, program development, and community-based roles since 2010. She has worked extensively with survivors and surviving family members of trauma and loss and also specializes in

supporting people in deepening understanding of and navigating unhealthy coping skills such as eating disordered behaviors, addictions, and other self-harming behaviors. As Clinical Program Coordinator and Therapist at Magnolia Creek Treatment Center for Women, Ms. Canan oversees clinical program



development, supervises clinical and dietetic staff, ensures quality client care, and provides individual and group therapy to residential and partial hospitalization clientele.



Renee Rienecke, Ph.D.

Renee is an Associate Professor in the Departments of Pediatrics and Psychiatry at the Medical University of South Carolina, and Director of the MUSC Friedman Center for Eating Disorders. After earning her Bachelor's degree at the University of Michigan, Dr. Rienecke received her Ph.D. from Northwestern University and completed her clinical psychology internship and postdoctoral fellowship at the University of Chicago. She was part of the Eating Disorders Program at the University of Chicago for ten years before returning to the University of Michigan to build the U-M Comprehensive Eating Disorders Program.



Elizabeth Wallis, M.D., M.S.H.P.

Elizabeth is an Assistant Professor in the Department of Pediatrics at the Medical University of South Carolina. She earned her M.D. from the Warren Alpert Medical School of Brown University and completed her pediatric residency training and a fellowship in Academic General Pediatrics at the Children's Hospital of Philadelphia/Perelman School of Medicine at the University of Pennsylvania. Her research and clinical expertise is focused on assessment and treatment of mental health conditions in primary care. She is a faculty member for the REACH Institute, a non-profit training program for primary care clinicians on pediatric psychopharmacology.