



4TH ANNUAL CONFERENCE SCHEDULE 2013

WEDNESDAY, FEBRUARY 20, 2013

7:00-8:00PM

Open 12 Step Meeting

THURSDAY, FEBRUARY 21, 2013

7:00AM-8:00AM

Open 12 Step Meeting

8:00AM- 9:00AM

Registration- possible Continental Breakfast

9:00AM-9:15AM

Welcome & Announcements

9:15AM- 10:45AM

Opening Speaker

"The Brain Fix: Using Neuroscience as a Metaphor for Recovery"

Ralph Carson, PhD, RD (1.5)



10:45AM-11:00AM

Break with Exhibitors

11:00AM-12:00PM

"The Spirituality of Taking Action"

Debra Jay (1.0)

Love FIRST



12:15PM-1:45PM

Luncheon and Speaker

Keynote#1

"Eating Disorder Recovery Protection: Preparing Patients for Life after Treatment"

Jessica Setnick, MS, RD, CEDRD (1.5) Ranch 2300



2:00PM-3:00PM

"Etiology of Eating Disorders: Newest Research about the Causes"

Rebecca Cooper, LMFT, CCH, CEDS-S (1.0)

Rebecca's House



3:00PM-3:15PM

Break with Exhibitors

3:15PM-4:15PM

"The Elephant in the Room"

Chase Bannister, MDIV, MSW, LCSW, CEDS

(1.0) Veritas Collaborative



4:30PM-5:30PM

"The Healing Power of Groups"

Tammy Holcomb, LPC (1.0)

Carolina House



Dinner on your own, open networking Opportunity for off site dinners...

Total Day CEs:

7.0

 **FRIDAY, FEBRUARY 22, 2013**

7:00AM-8:00AM

Open 12 Step Meeting

7:00AM-8:00AM

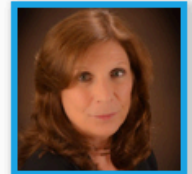
Possible Breakfast/ networking opportunity with exhibitors

10:00AM-10:15AM

Break with Exhibitors

10:15AM-11:15AM

"The Relationship between Eating Disorders and Trauma: A reconceptualization of PTSD"
Cathy Reto, PhD (1.0) Pinegrove



11:30AM-1:00PM

Luncheon and Speaker
Keynote#2

"Genetics, Temperament and Eating Disorders"
Ken Weiner, MD, FAED, CEDS (1.5) Eating Recovery Center

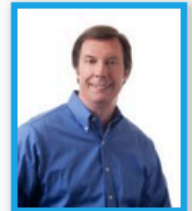


1:00PM-1:30PM

Networking and Give-A-WAYS

1:30PM-2:30PM

"OCD and Eating Disorders: Who's Driving the Bus?"
Guy Oberwise, LCSW, CAC (1.0)
Timberline Knolls



2:30PM-2:45PM

Break with Exhibitors

2:45PM-4:45PM

"Moving Moreno's Social Atom into Action with Eating Disorders"
Susan Mullins Overman, LMHC, PAT & Sandy Seeger, LMHC, PAT (2.0) Hyde Park Center



Total Day CEs:

6.5

Total Workshop CEs:

13.5